



## Jimmy Dale Swanger

August 1, 1976 - December 20, 2024

Jimmy Dale Swanger, born August 1, 1976 passed away at his home after a lengthy illness on Friday, December 20, 2024.

He was preceded in death by his grandfather, Tilman Swanger; grandmother, Hattie Swanger Green; and brother, Billy Joe Swanger.

He is survived by his mother, Margaret Ellison; fiancé, Frannie Scruggs; several aunts and one uncle; his niece and nephew; and a host of cousins.

Graveside services will be held at 2:00 pm Monday, December 23, 2024 at Stokely Cemetery on Black Branch Road with burial to follow.

Family and friends may sign the guest register online at [www.manesfuneralhome.com](http://www.manesfuneralhome.com).

Arrangements by Manes Funeral Home.

# Previous Events

## Graveside Service

DEC **23**. 2:00 PM.

Stokely Cemetery

## Graveside Service

DEC **23**. 2:00 PM (ET)

Stokely Cemetery  
Black Branch Road  
Del Rio, TN 37727

# Tribute Wall



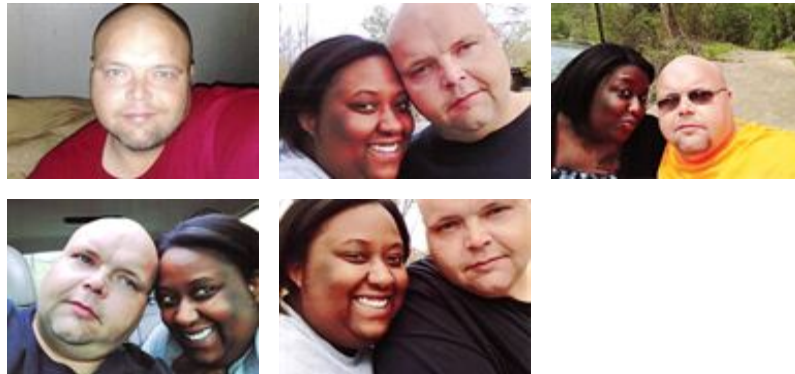
“ *Manes Funeral Home, Inc. created a Tribute Video in memory of Jimmy Dale Swanger*



Manes Funeral Home, Inc. - December 23, 2024 at 03:32 PM



“ *73 files added to the album Life Tributes*



Manes Funeral Home, Inc. - December 23, 2024 at 10:18 AM



“ *Brenda cook lit a candle in memory of Jimmy Swanger*



Brenda cook - December 22, 2024 at 04:09 PM

VP

“ *velmer partin lit a candle in memory of Jimmy Swanger*



**velmer partin** - December 22, 2024 at 02:54 PM

D(

“ *Sending my Deepest Condolences to All of the family 🙏🙏🙏🙏🙏🙏🙏🙏❤️*



**Debbie (Daniels)Gann** - December 21, 2024 at 02:17 PM

SJ

“ *Margaret, I am so very sorry to hear of the loss of Your Son. My thoughts and prayers are with You and Your Family during this difficult time.*

**Sandra Strom Jenkins** - December 21, 2024 at 01:10 PM

RJ

*Margaret, we were so sorry to hear of Dale's passing and his illness. Sending our love and prayers to you and your family during this difficult time.*

*Roy, Linda and Jay Jenkins*

**Roy and Linda Jenkins** - December 21, 2024 at 06:08 PM